

Solutions Through Innovation:

Item Banking for Test Developers

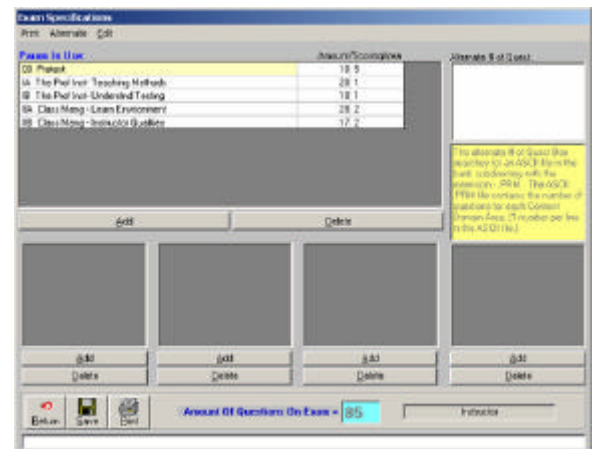
There are a lot of item banking systems on the market, but most are written for test vendors—systems that make it easier for the company to print tests or deliver them to computers. **SMT-Bank**® was written with you—the organization actually responsible for tests—in mind. Because of that, you will find **SMT-Bank** more intuitive and more flexible than other systems.

And **SMT-Bank** is actually a powerful test support system, not just a storage device, with a broad collection of capabilities:

- Storage, retrieval, and maintenance of test items, including extensive descriptive information about each item
- Development and printing of examinations (or delivery to computer-based systems)
- Calculation, storage, and retrieval of item statistics
- Calculation of test scores

Some specific capabilities of the system are:

- *State-of-the-art word processing for item text and test production*
- *Items can be reviewed and revised interactively at meetings*
- *Extensive descriptive information about each item and test is stored*
- *Item sets are maintained together*
- *Descriptive information about the test is used to evaluate the items in the bank and the items in examinations*
- *Estimated test statistics can be produced before administration*
- *Tests are still constructed by experts*
- *Newly assembled tests are viewed on the screen before release*
- *Keys are automatically generated when a new test form is created*
- *Item and test analysis functions are integrated into the system*
- *The system keeps on-going records of item statistics*
- *Common-item equating is supported*
- *Unscored items are accommodated*
- *Data can be readily exported for further analysis or reporting*



Candidate identification data and examination scores are exported for inclusion in Candidate Data Files

Technical Requirements

- Windows® 98, 2000, Millennium, or XP
- Microsoft Word® 2000 or XP
- Minimum 600 megahertz processor
- Minimum 64 megabytes RAM
- Minimum 50 megabytes available hard drive



Schroeder
Measurement
Technologies
262 Chapman Road
Suite 108
Newark, DE 19702
(302) 737-0796
number1@smttest.com