

Home Office

2494 Bayshore Blvd.
Suite 201
Dunedin, FL 34698
800.556.0484

Business Development

262 Chapman Road
Suite 103
Newark, DE 19702
866.737.2101

info@smttest.com

Candidate Service

Offices

- London
- Tokyo
- Hong Kong

**SMT and its staff main-
tain membership in:**

- NOCA
- ATP
- CLEAR
- AMC Institute
- APA
- NCME
- ABNS
- ITC
- NCTA
- AMA

Inside this issue:

SMT Offers Paper & Pencil	2
Meet Rachael Tan, PhD	2
NC-CME Success Story	3
New Clients	4
Where We'll Be	4
Tip for the month: Face-to-Face meetings produce better results	5

NC-CME Delighted with SMT's Test Development Services

NC-CME and SMT worked together to successfully develop a new competency program.

Constant change tends to churn the standards that govern the field of continuing medical education (CME) for physicians. Despite the expertise required to manage the complexities of this mega-industry, there was no formal certification program to measure the professional competence of persons who develop and fund CME activities. That is, until one enterprising organization teamed with an experienced test development company to make history by developing and validating a certification exam in June 2008.

In October 2007, the National Commission for Certification of CME Professionals (NC-CME) contracted with Schroeder Measurement Technologies (SMT) to develop the first certification examination exclusively designed for employees in the continuing medical education (CME) field. NC-CME had determined an immediate need to establish a credentialing program that would meet the strict accreditation standards of the National Commission for Certifying Agencies (NCCA) - a subdivision of the National Organization of Competency Assurance (NOCA) - and sent out an RFP to find the best company in the business of developing certification exams.

The NC-CME's Certified CME Professional (CCMEP) credential is a ground-breaking measure of competence for CME professionals, who

develop and distribute educational activities essential to more than 700,000 practicing physicians and 70,000 physician assistants in the United States. The NC-CME certification will benefit the health of the public by providing assurance that physicians receive objective, unbiased information about medical advances. The credential will give organizations a method of verifying the knowledge and skills of their CME staff and will document their ability to be compliant with national guidelines developed by the Accreditation Council for CME (ACCME), the Federal Food and Drug Administration (FDA), and the Department of Health and Human Services Office of the Inspector General (HHS OIG). According to the NC-CME's website, minimum competency in the field of CME includes understanding principles of adult learning and professional development; knowing how to frame clinical content for maximum impact; and interpreting rules and regulations that define the field.

continued on page 3
Test Development Services

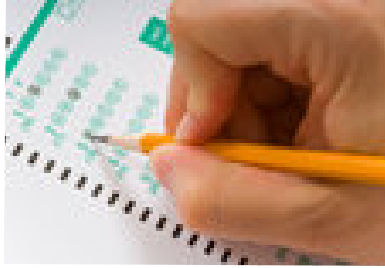


SMT Offers Paper and Pencil Testing

Is computer-based testing too costly for delivering your test? SMT is now offering paper and pencil testing as an additional service for clients.

Paper and pencil testing allows associations a cost-effective test delivery alternative in secure test centers. The network of primarily college and private test centers provides our clients with experienced proctors in convenient locations.

Test sites are recruited to provide your group with secure options in most areas across the United States and Canada. Our network of sites is growing and being actively recruited to increase the number of options convenient for you and your candidates.



Do you already have a paper and pencil test and are you looking for someone to handle the cumbersome tasks of test management and administration? With the development of an easy to use registration system, SMT

provides seamless administration for your examination with minimal interaction needed from your association. An internet-based system will allow scheduling, site selection, date selection, and candidate registration with a click of a button.

SMT is offering paper and pencil testing and test management at highly competitive rates. Call (866.737.2101) or [email](#) our business development office for information about this and other services.

Psychometrician Added to Test Development Team

Rachael Tan is SMT's newest addition to our Psychometrician team. She will work within SMT's Research and Development Department focusing on Item Response Theory (IRT). Rachael has special interest in explanatory item response modeling, including differential item functioning (DIF). Rachael's other areas of expertise include working with multi-level and multidimensional modeling and test equating.

When asked about what her goals are in her new position, Rachael says, "I hope to be able to apply my IRT skills to improve and validate the exams currently in use here, as well as assist in the development of new ones." She plans to keep one foot in the research world in order to keep abreast of new methodologies and applications of IRT. She also hopes to get her dissertation published and continue to present at conferences.

Rachael enjoys running and is currently training for a marathon. She also enjoys cooking and traveling to visit her friends who live all over the world.

For our clients, this increases our available resources for psychometric services. If you are interested in finding out more information about what SMT offers associations, please contact our Business Development office.



Dr. Rachael Tan, PhD

Continued from Page 1:

Test Development Services

The NC-CME selected SMT to assist in the difficult process of developing a program that aims to become recognized by the NCCA. Tasks addressed by this collaboration included job analysis, test development, beta testing, item analysis, and test administration. The NC-CME tapped into SMT's experience in working with healthcare organizations and the project hit the ground running with incredible speed. Expectations were set up front with detailed timelines, challenging both SMT and NC-CME. With Dana Anderson-Pancoe, Dr. Bhaskar Dawadi, and Darcy St. George managing the project, all deadlines were met and the test launched according to schedule.

"From the beginning, SMT played a critical part in the process of establishing the NC-CME program" noted Judy Ribble, PhD, NC-CME's Executive Director. "Joel Karmazyn spoke so knowledgeably about establishing certification programs that he quickly gained the confidence of the Board. All along, the SMT program staff understood our needs and they were willing to go out on a limb to assist us in turning our concepts into realities."

For other groups thinking about pursuing a credentialing program, Dr. Ribble recommended holding item-writing workshops at the SMT headquarters facility in Dunedin, Florida. She explained it resulted in a "bonding experience for our item writers and gave us the chance to appreciate the professional way that SMT staff members serve as mentors during the demanding process of writing credible test items." When asked what made the workshop "work", she complimented the Test Development staff: "The SMT team was a good match for our Subject Matter Experts. They quickly learned to speak our language and brought out the best in a group of highly educated people."

"SMT played a critical part in the process of establishing the NC-CME program"

"As Executive Director," she continued, "I've been blessed with a Board that understands hard work and pitches in to make sure timelines are met. Groups interested in pioneering certification programs need to make sure their leaders are fully committed to seeing the development process through to completion. I'd say that NC-CME's formula for success is a loyal Board, plus a test development partner delivering 'on time and on budget'. SMT has truly exceeded our expectations."

About NC-CME

NC-CME is a private, non-profit, tax-exempt organization created in 2006 by an independent group of CME professionals committed to serving the public by creating a standard of competence for persons who create, deliver, and/or support CME programs. For more information, visit their website at

www.NC-CME.org

**LOOK FOR
SMT'S NEW
AND
IMPROVED
NEWSLETTER
COMING
SOON TO
YOUR EMAIL!**

**SMT will be improving
Dimensions with
industry news,
relevant stories
impacting you, and
more!**



**Expect a more
frequent, easier to
read, internet-based
format coming with
our next newsletter.**



SMT Welcomes New Clients



Electronic Retailing Association



American Chiropractic Neurology Board



Restoration Industry Association



American Legal Nurse Consultant Certification Board



J.A. Thomas & Associates



American Society of Pain Educators

Where We'll Be:

- February 20 - 22, 2009
ASAE Great Ideas, Miami
- February 22 - 25, 2009
ATP, Palm Springs
- March 6 - 7, 2009
ABNS, Fort Lauderdale
- April 12 - 16, 2009
NCME, San Diego
- April 30 - May 1, 2009
ASAE M&M, Baltimore
- July 2-3, 2009
CLEAR Int'l, Dublin

Congratulations NOCA!

NOCA Achieves ANSI Accreditation

On July 11, NOCA announced it is now accredited by the American National Standards Institute (ANSI) as a developer of American National Standards.



SMT congratulates our friends at NOCA on accomplishing this prestigious milestone.



From SMT

TIP!

for helping your program succeed

Face-to-Face Meetings Produce Better Results

When considering options for your item writing meetings, cost-cutting measures are not

Budget restraints and the allure of technology can tempt clients to opt for conference calls and webinars to facilitate important meetings, but job analysis meetings and item and examination development workshops are best kept face-to-face. Face-to-face meetings provide the best environment for three main areas: productivity, quality, and security.

It is extremely difficult to monitor the productivity of SMEs during conference calls and web meetings. With the advent of the mute button comes the inevitable fact the SME on the other end of the phone can be engaged in all sorts of activities, other than the discussion on role delineation at hand. The facilitator of the meeting is none the wiser. Monitoring SME participation is important since the validity of the examination is heavily rooted in their involvement. Face-to-face meetings allow for group discussions, lead by an experienced facilitator, who can effectively keep the group on track. Also, face-to-face meetings permit the facilitator to work one-on-one with SMEs who may need individual attention, or who may not wish to ask their questions via a “chat-log” for all to see.

The quality of the final product resulting from conference calls and web meeting can be greatly hindered if in-person meetings are not held for initial item and exam development workshops. This is particularly true during a client’s first year with a new program, where SMEs are not yet experienced enough to develop items on their own outside a workshop setting. During workshops, SMEs benefit from training, question and answer sessions with an experienced test developer, and writing and reviewing items with other SMEs in a collaborative effort. After in-person workshops, SMEs are much better prepared to produce well-written items on their own.

Finally, security is better monitored during in-person meetings. There is no need to transmit data via email or ship documents to SMEs. The test developers have access to all the materials they need in-house (including shredders) and can easily account for, prepare, and store testing material in a secure manner.

Although conference calls and web meetings are cost-effective means of facilitating meetings, face-to-face meetings still impart a personal touch that is vital to the test development process.

